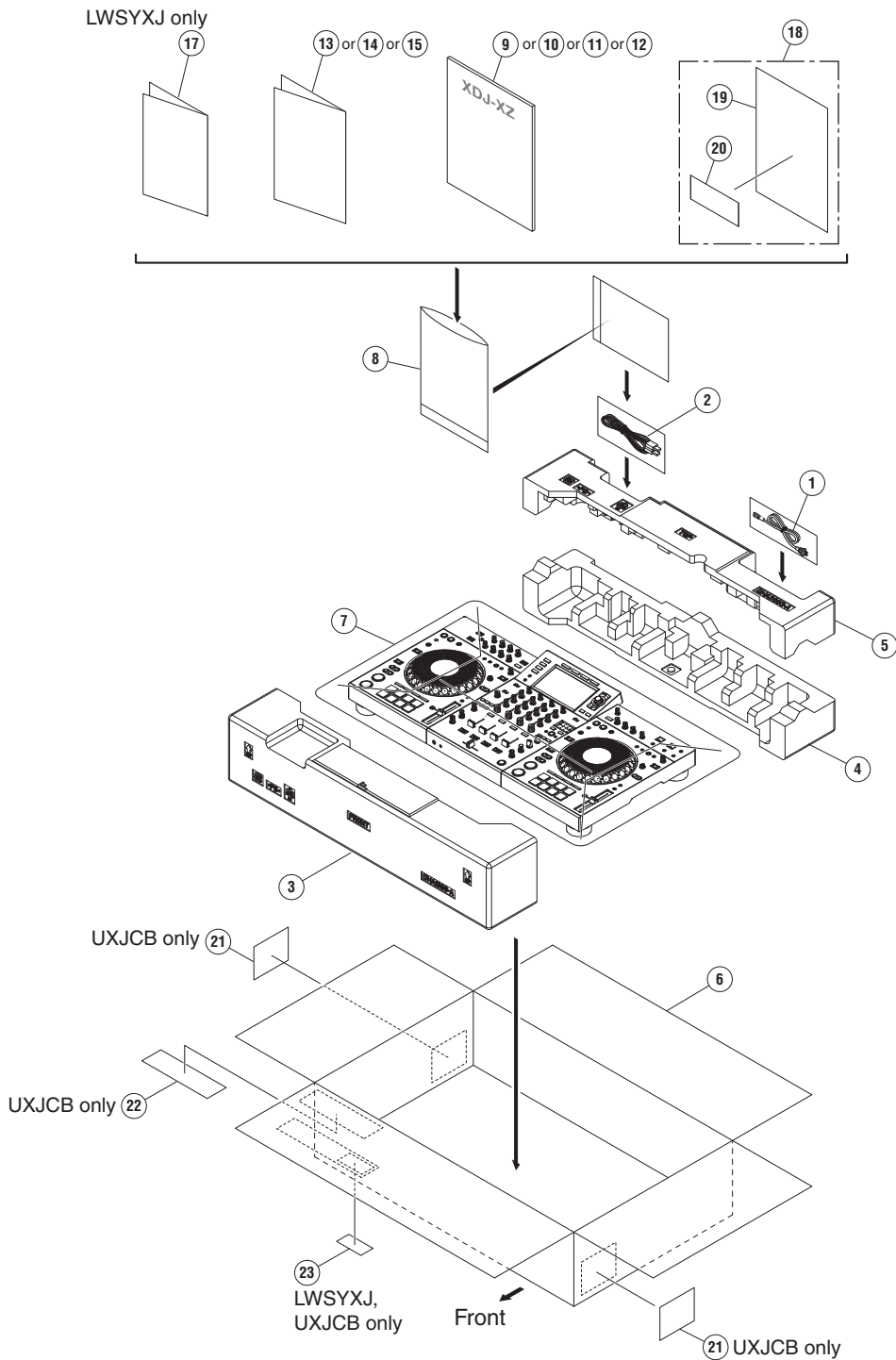


9. EXPLODED VIEWS AND PARTS LIST

- NOTES:
- Parts marked by "NSP" are generally unavailable because they are not in our Master Spare Parts List.
 - The \triangle mark found on some component parts indicates the importance of the safety factor of the part. Therefore, when replacing, be sure to use parts of identical designation.
 - Screws adjacent to ∇ mark on product are used for disassembly.
 - For the applying amount of lubricants or glue, follow the instructions in this manual. (In the case of no amount instructions, apply as you think it appropriate.)

9.1 PACKING SECTION



(1) PACKING SECTION PARTS LIST

<u>Mark No.</u>	<u>Description</u>	<u>Part No.</u>	<u>Mark No.</u>	<u>Description</u>	<u>Part No.</u>
⚠	1 Power Cord	See Contrast table (2)	13	Sub Manual	See Contrast table (2)
	2 USB Cable	DDE1150	14	Sub Manual	See Contrast table (2)
	3 Packing Pad	DHA1999	15	Sub Manual	See Contrast table (2)
	4 Packing Pad	DHA2000	16	•••••	
	5 Packing Pad	DHA2003	NSP 17	Warranty	See Contrast table (2)
	6 Packing Case	See Contrast table (2)	NSP 18	1..License Key Card Assy	DEA1046
	7 Mirror Mat	DHL1201	NSP 19	2..Leaflet	DRM1410
NSP	8 Polyethylene Bag	AHG7117	NSP 20	2..rekordbox dj license key card	DXA2304
	9 Operating Instructions (Quick nStart Guide)	See Contrast table (2)	21	Label	See Contrast table (2)
	10 Operating Instructions (Quick nStart Guide)	See Contrast table (2)	22	Label	See Contrast table (2)
	11 Operating Instructions (Quick nStart Guide)	See Contrast table (2)	NSP 23	Label	See Contrast table (2)
	12 Operating Instructions (Quick nStart Guide)	See Contrast table (2)			

(2) CONTRAST TABLE

XDJ-XZ/AXJ, LWSYXJ and UXJCB are constructed the same except for the following:

Mark	No.	Symbol and Description	XDJ-XZ/AXJ	XDJ-XZ/LWSYXJ	XDJ-XZ/UXJCB
⚠	1	Power Cord	DDG1114	ADG1244	DDG1108
	6	Packing Case	DHG3732	DHG3731	DHG3731
	9	Operating Instructions (Quick nStart Guide)(En)	Not used	Not used	DRH1539
	10	Operating Instructions (Quick nStart Guide)(En, Fr, De, It)	Not used	DRH1540	Not used
	11	Operating Instructions (Quick nStart Guide)(NI, Es, Pt, Ru)	Not used	DRH1541	Not used
	12	Operating Instructions (Quick nStart Guide)(Zhcn)	DRH1542	Not used	Not used
	13	Sub Manual	DRH1594	Not used	Not used
	14	Sub Manual	Not used	DRH1592	DRH1592
	15	Sub Manual	Not used	DRH1593	DRH1593
NSP	17	Warranty	Not used	DRY1270	Not used
	21	Label	Not used	Not used	DRW2831
	22	Label	Not used	Not used	DRW2839
NSP	23	Label	Not used	DRW2838	DRW2838

9.2 BOTTOM SECTION

1

2

3

4

A

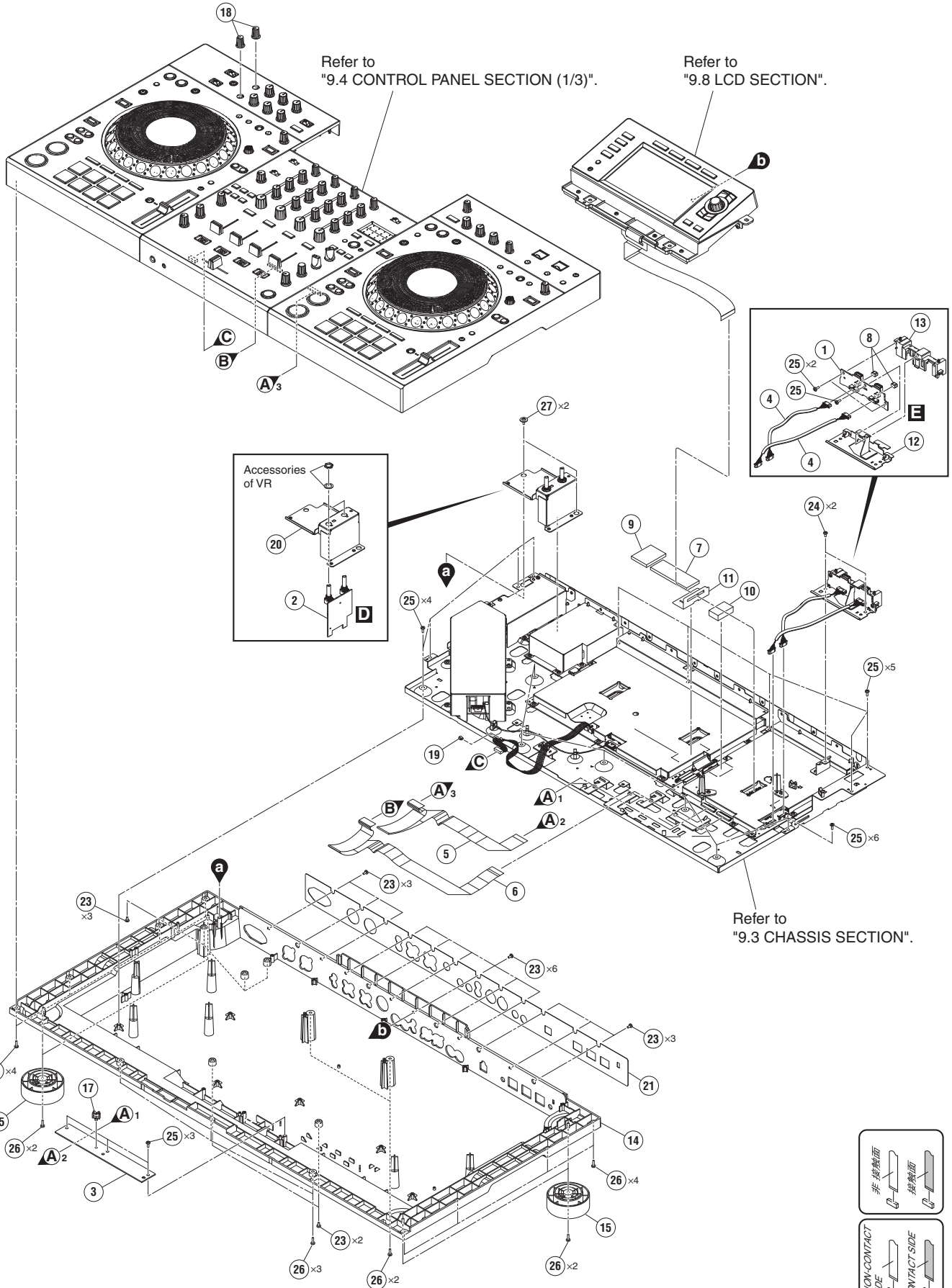
B

C

D

E

F



1

2

3

4

(1) BOTTOM SECTION PARTS LIST

<u>Mark No.</u>	<u>Description</u>	<u>Part No.</u>	<u>Mark No.</u>	<u>Description</u>	<u>Part No.</u>
1	USBA Assy	DWX4294	16	•••••	
2	MCTR Assy	DWX4302	17	Holder	VEC1355
3	STL4 Assy	DWX4322	18	Knob	DAA1442
4	Shielded Conn-Cable	DDA1094	19	Binder	ZCA-SKB90BK
5	FFC	DDD1952	20	Stay	DNH3429
6	FFC	DDD1953	21	Rear Panel	See Contrast table (2)
7	Cushion/FFC	DEC3531	22	•••••	
8	Gasket/JOG	DEC3562	23	Screw	BBZ30P060FTB
9	Cushion	DEC3592	24	Screw	BBZ30P060FTC
10	Cushion	DEC3887	25	Screw	BPZ30P080FNI
11	Barrier	DEC3888	26	Screw	BPZ30P100FTB
12	Stay	DNH3311	27	DM Screw (FTC)	DBA1260
13	Base	DNK6708			
⚠ 14	Chassis	DNK6862			
15	Insulator Assy	DXB2131			

(2) CONTRAST TABLE

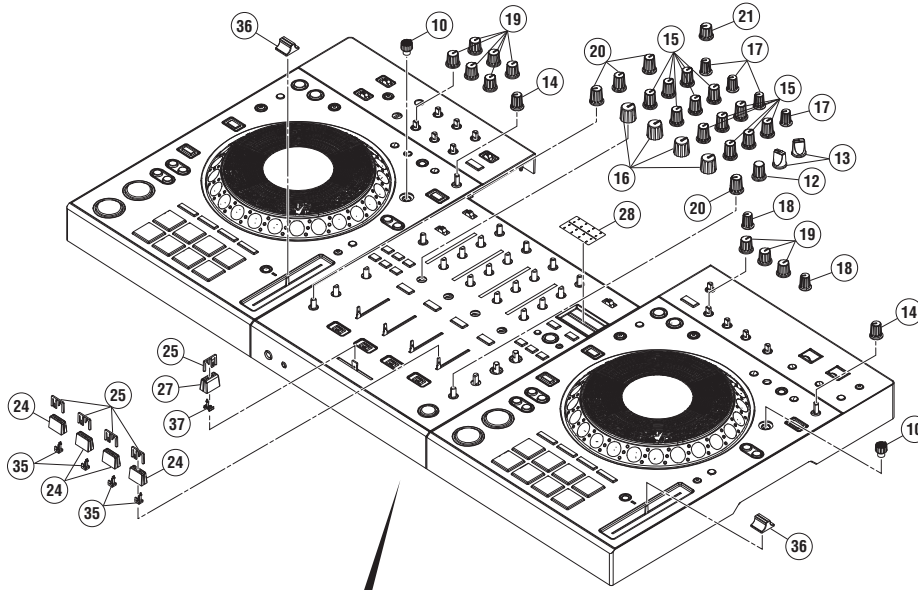
XDJ-XZ/AXJ, LWSYXJ and UXJCB are constructed the same except for the following:

Mark	No.	Symbol and Description	XDJ-XZ/AXJ	XDJ-XZ/LWSYXJ	XDJ-XZ/UXJCB
	21	Rear Panel	DAH3271	DAH3268	DAH3269

CHASSIS SECTION PARTS LIST

<u>Mark No.</u>	<u>Description</u>	<u>Part No.</u>	
1	MAIN Assy	DWX4287	
2	AUDIO Assy	DWX4298	A
3	MCIN Assy	DWX4300	
4	STL1 Assy	DWX4319	
5	STL2 Assy	DWX4320	
6	STL3 Assy	DWX4321	
⚠	7 SW POWER SUPPLY	DWR1548	
⚠	8 AC Inlet	DKP3994	
	9 Crimp Connector	DKP3993	
	10 FFC	DDD1950	
	11 Connector Assy	PF06PP-D37	B
	12 Heat Cond Sheet	DEB2020	
	13 Heat Cond Sheet	DEB2073	
	14 Earth Terminal	DKE1015	
	15 Stay	DNH3430	
	16 •••••		
	17 Bracket	DNH3431	
	18 Shield Case	DNH3432	
	19 Shield Case	DNH3433	
	20 Shield Case	DNH3434	C
	21 Shield Case	DNH3435	
	22 Shield Case	DNH3436	
	23 Support	DNK6869	
NSP	24 PCB Holder	PNW1706	
	25 Holder	VEC1355	
	26 •••••		
	27 •••••		
	28 Nut (M12)	NKX2FNI	
	29 Washer	WA32F100Q050	D
	30 Spring Lock Washer	WS40FNI	
	31 Screw	BBZ30P060FTC	
	32 Screw	IBZ30P080FTB	
	33 Screw	PMH40P080FTC	
	34 Screw	PPZ30P080FTB	
	35 Screw (M3 * 5)	DBA1340	

9.4 CONTROL PANEL SECTION (1/3)

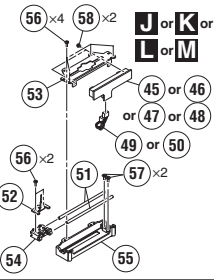


• Bottom view

• Top view

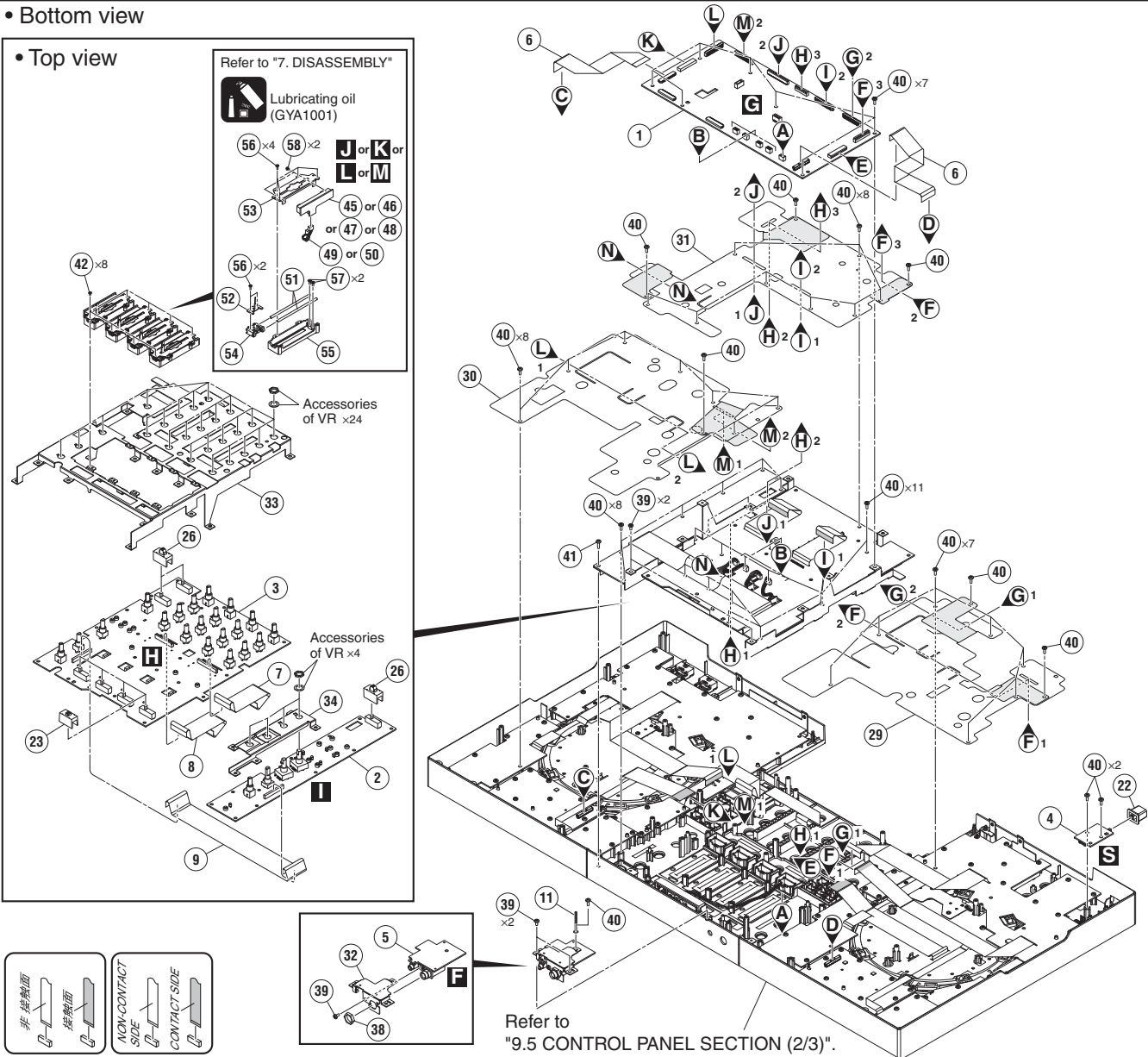
Refer to "7. DISASSEMBLY"

Lubricating oil
(GYA1001)



Accessories
of VR x24

Accessories
of VR x4



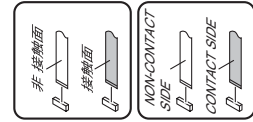
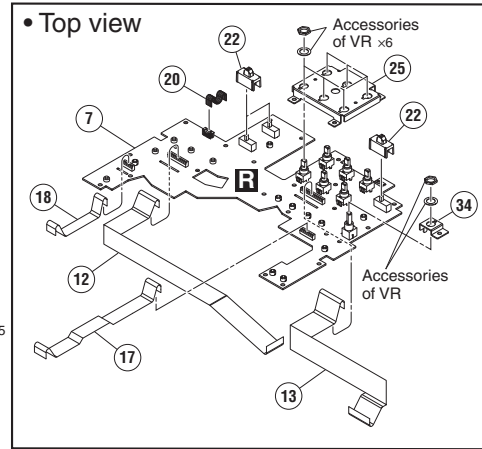
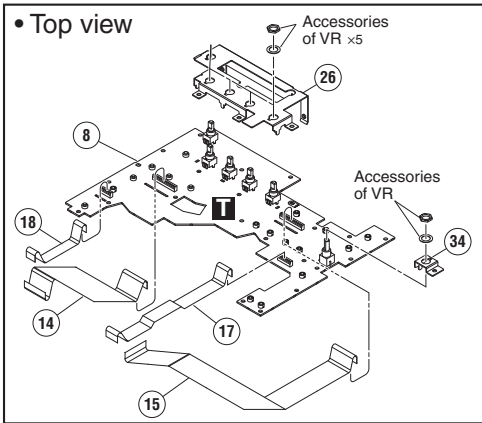
Refer to
"9.5 CONTROL PANEL SECTION (2/3)".

CONTROL PANEL SECTION (1/3) PARTS LIST

<u>Mark No.</u>	<u>Description</u>	<u>Part No.</u>	<u>Mark No.</u>	<u>Description</u>	<u>Part No.</u>	
1	UCOM Assy	DWX4296	46	CHF2 Assy	DWX4304	
2	EFSW Assy	DWX4297	47	CHF3 Assy	DWX4305	A
3	MIXER Assy	DWX4299	48	CHF4 Assy	DWX4306	
4	PWSW Assy	DWX4312	49	Connector Assy (CH1 to CH3)	PF03PP-B05	
5	HPJK Assy	DWX4301	50	Connector Assy (CH4)	PF03PP-B07	
6	FFC	DDD1935	51	Guide Shaft VK1	DLA1978	
7	FFC	DDD1943	52	Lever Plate	DNH2954	
8	FFC	DDD1944	53	VR Stay	DNH2955	
9	FFC	DDD1946	54	Slider Base	DNK5851	
10	Knob	DAA1406	55	Shaft Holder	DNK5852	
11	Cord Clamper (Steel)	RNH-184	56	Screw	BPZ20P060FTC	B
12	Rotary SW Knob (C)	DAA1180	57	Screw	CPZ26P080FTC	
13	Select Knob	DAA1205	58	Screw	PMH20P040FTC	
14	Knob/LBK	DAA1284				
15	Knob/RSW	DAA1305				
16	Knob/FRE	DAA1309				
17	Knob	DAA1408				
18	Knob	DAA1409				
19	Knob	DAA1432				
20	Knob	DAA1434			C	
21	Knob	DAA1435				
22	Power Knob	DAC2306				
23	Slide SW Cap (W)	DAC2401				
24	Knob	DAC3539				
25	Slider Knob 2	DAC2685				
26	Cap	DAC3136				
27	Knob	DAC3238				
28	Sheet	DEC3843				
29	Barrier	DEC3847			D	
30	Barrier	DEC3848				
31	Barrier	DEC3849				
32	Stay/HP	DNH3182				
33	Stay	DNH3426				
34	Stay	DNH3427				
35	Slider Knob Stopper	DNK5888				
36	Knob/SLD	DNK5981				
37	Stopper	DNK6440				
38	Nut M12	DBN1018			E	
39	Screw	BBZ30P060FTC				
40	Screw	BPZ30P080FNI				
41	Screw	BPZ30P100FTB				
42	Screw	BSZ20P040FTB				
43					
44					
45	CHF1 Assy	DWX4303			F	

9.5 CONTROL PANEL SECTION (2/3)

A • Bottom view



Refer to "9.8 JOG DIAL SECTION".

Refer to "9.8 JOG DIAL SECTION".

Refer to "7. DISASSEMBLY"

Lubricating oil (GYA1001)

Refer to "9.6 CONTROL PANEL SECTION (3/3)".

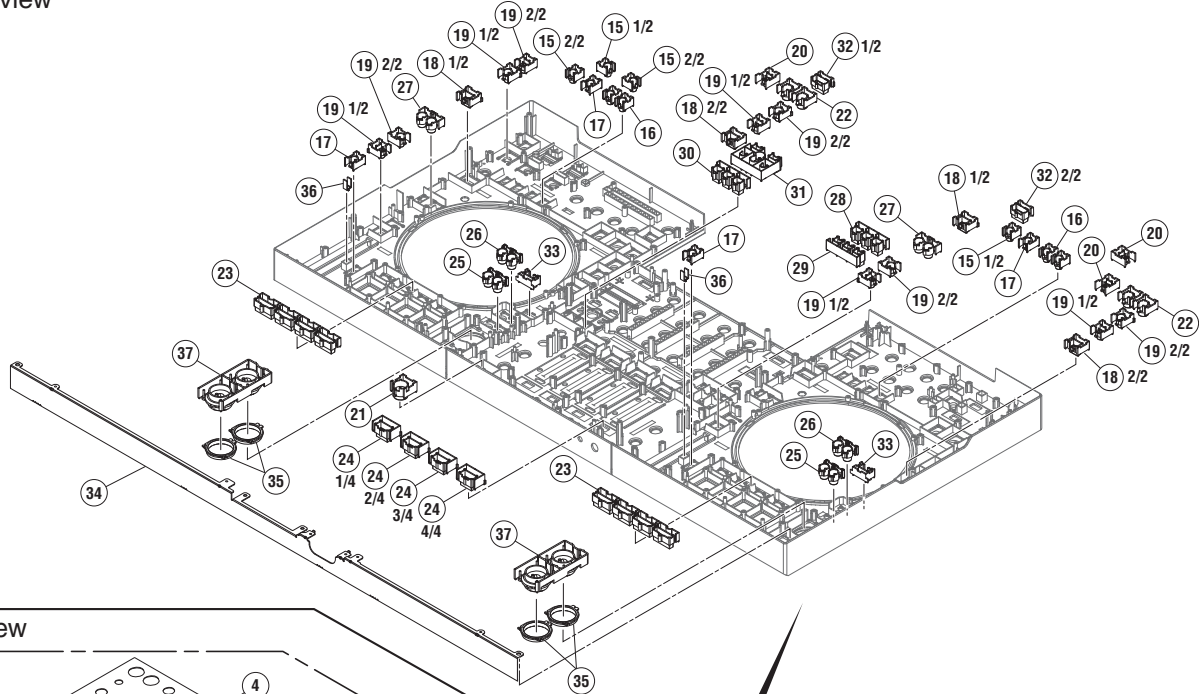
CONTROL PANEL SECTION (2/3) PARTS LIST

<u>Mark No.</u>	<u>Description</u>	<u>Part No.</u>	
1	PAD1 Assy	DWX4292	
2	PAD2 Assy	DWX4293	A
3	PLAY1 Assy	DWX4307	
4	PLAY2 Assy	DWX4308	
5	SER1 Assy	DWX4310	
6	SER2 Assy	DWX4314	
7	DCK1 Assy	DWX4309	
8	DCK2 Assy	DWX4313	
9	TMP1 Assy	DWX4311	
10	TMP2 Assy	DWX4315	
11	XPAD Assy	DWX4290	B
12	FFC	DDD1939	
13	FFC	DDD1940	
14	FFC	DDD1941	
15	FFC	DDD1942	
16	FFC	DDD1945	
17	FFC	DDD1947	
18	FFC	DDD1948	
19	FFC	DDD1949	
20	Jumper Wire	D20PYY0405E	C
21	Jumper Wire	D20PYY0410E	
22	SW Cap	DAC2753	
23	Tape	DEH1083	
24	Bracket	DNH3312	
25	Stay	DNH3424	
26	Stay	DNH3425	
27	Door	DNK6497	
28	Holder	DNK6710	
29	Holder	DNK6867	D
30	Lens	DNK6868	
31	Button	DEB2075	
32	Sheet	DEC3739	
33	Spacer	DEC3740	
34	VR Stay S	DNH2964	
35	Screw	BPZ30P080FNI	
36	•••••		
37	CRFD Assy	DWX4295	
38	Connector Assy	PF03PP-B15	E
NSP 39	Cushion	DEC3356	
40	Lever	DNH3211	
41	Stay	DNH3301	
42	Holder	DNK6425	
43	Slider	DNK6426	
44	Guide Bar	VLL1514	
45	Screw	BBZ30P060FTC	
46	Screw	BPZ20P050FTC	F
47	Screw	CPZ26P080FTC	

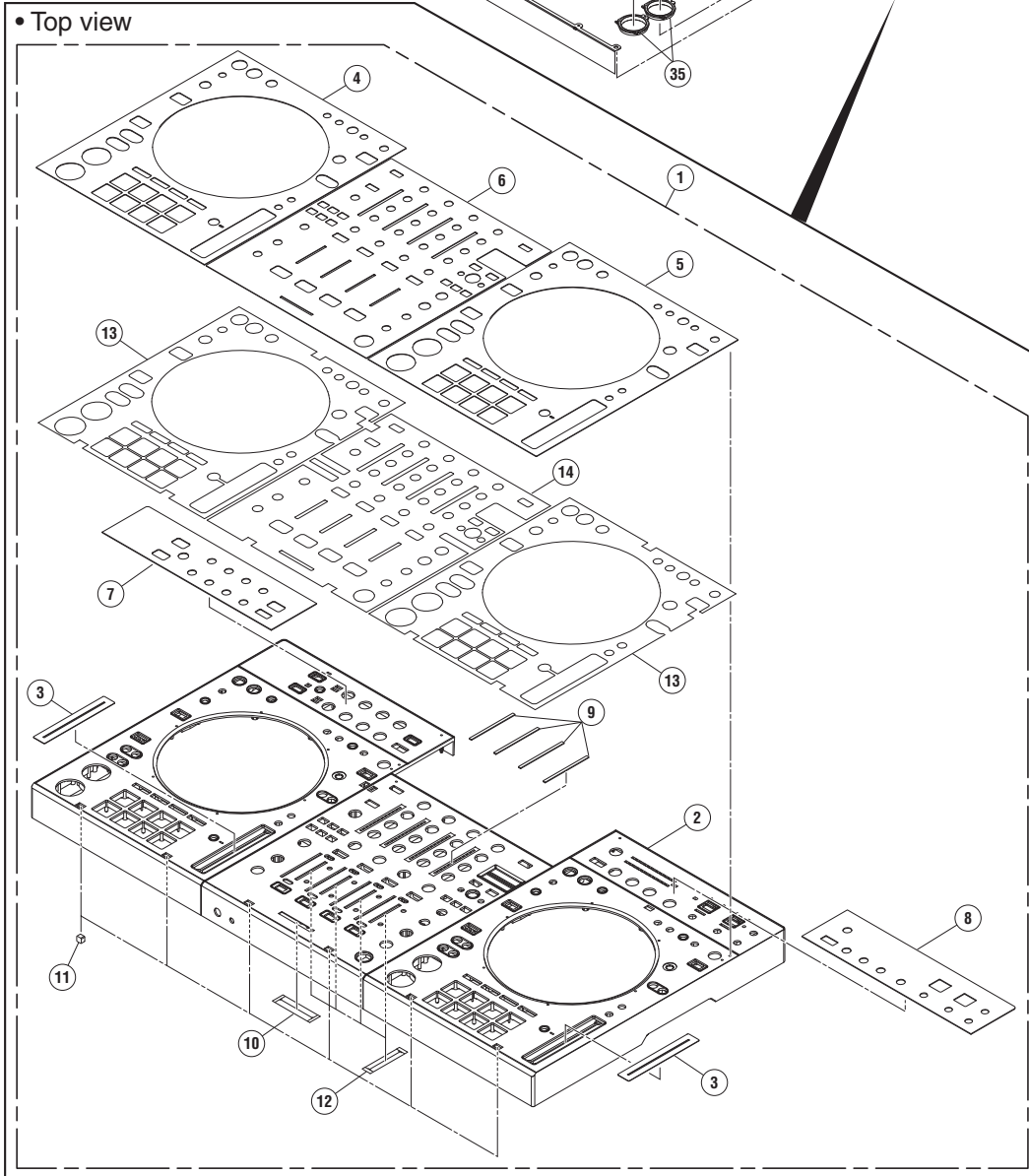
9.6 CONTROL PANEL SECTION (3/3)

1 2 3 4

A • Bottom view

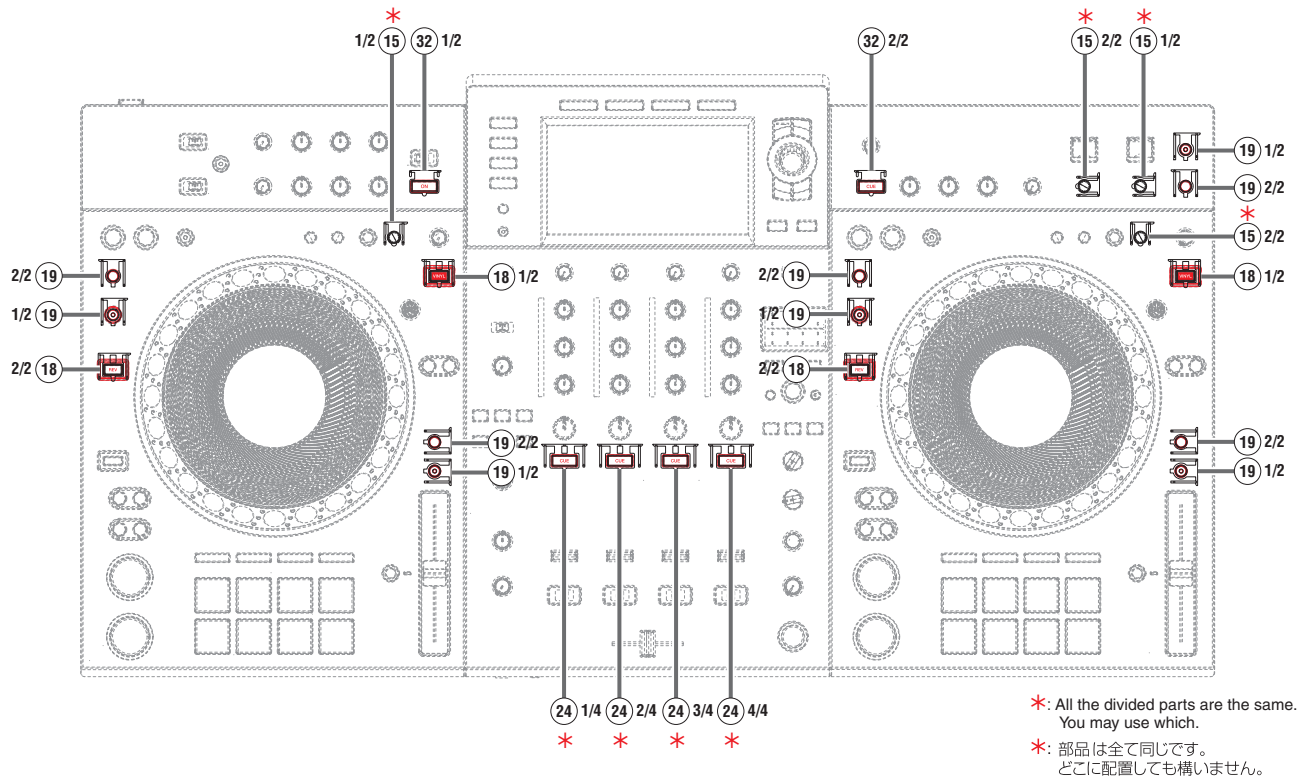


C • Top view



1 2 3 4

•The position of the divided parts / 分割部品の取り付け位置



CONTROL PANEL SECTION (3/3) PARTS LIST

Mark No.	Description	Part No.	Mark No.	Description	Part No.
	1..Control Panel Service Assy	DEA1094	21	Button/EF	DAC3040
△NSP 2	2..Control Panel	DNK6863	22	Button/LOP	DAC3074
3	2..Slide Sheet 1C	DAH2404	23	Button	DAC3285
NSP 4	2..Plate	DAH3261	24	Button	DAC3287
NSP 5	2..Plate	DAH3262	25	Button	DAC3363
NSP 6	2..Plate	DAH3263	26	Button	DAC3413
NSP 7	2..Plate	DAH3265	27	Button	DAC3478
NSP 8	2..Plate	DAH3266	28	Button	DAC3479
NSP 9	2..Plate	DAH3267	29	Button	DAC3480
10	2..Packing	DEC3642	30	Button	DAC3481
11	2..Gasket	DEC3719	31	Button	DAC3482
12	2..Sheet	DEC3795	32	Button	DAC3483
NSP 13	2..DS Tape	DEH1108	33	Button	DAC3502
NSP 14	2..DS Tape	DEH1109	34	Frame	DNH3423
15	Button/TMP	DAC2845	35	Ring Rens (PLAY)	DNK5315
16	Button/CAL	DAC3020	36	Lens	DNK5862
17	Button/DLT	DAC3021	37	Button Unit	DXB2198
18	Button/RVL	DAC3023			
19	Button/MT	DAC3029			
20	Button/REL	DAC3030			

9.7 JOG DIAL SECTION

1

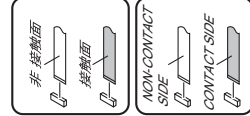
2

3

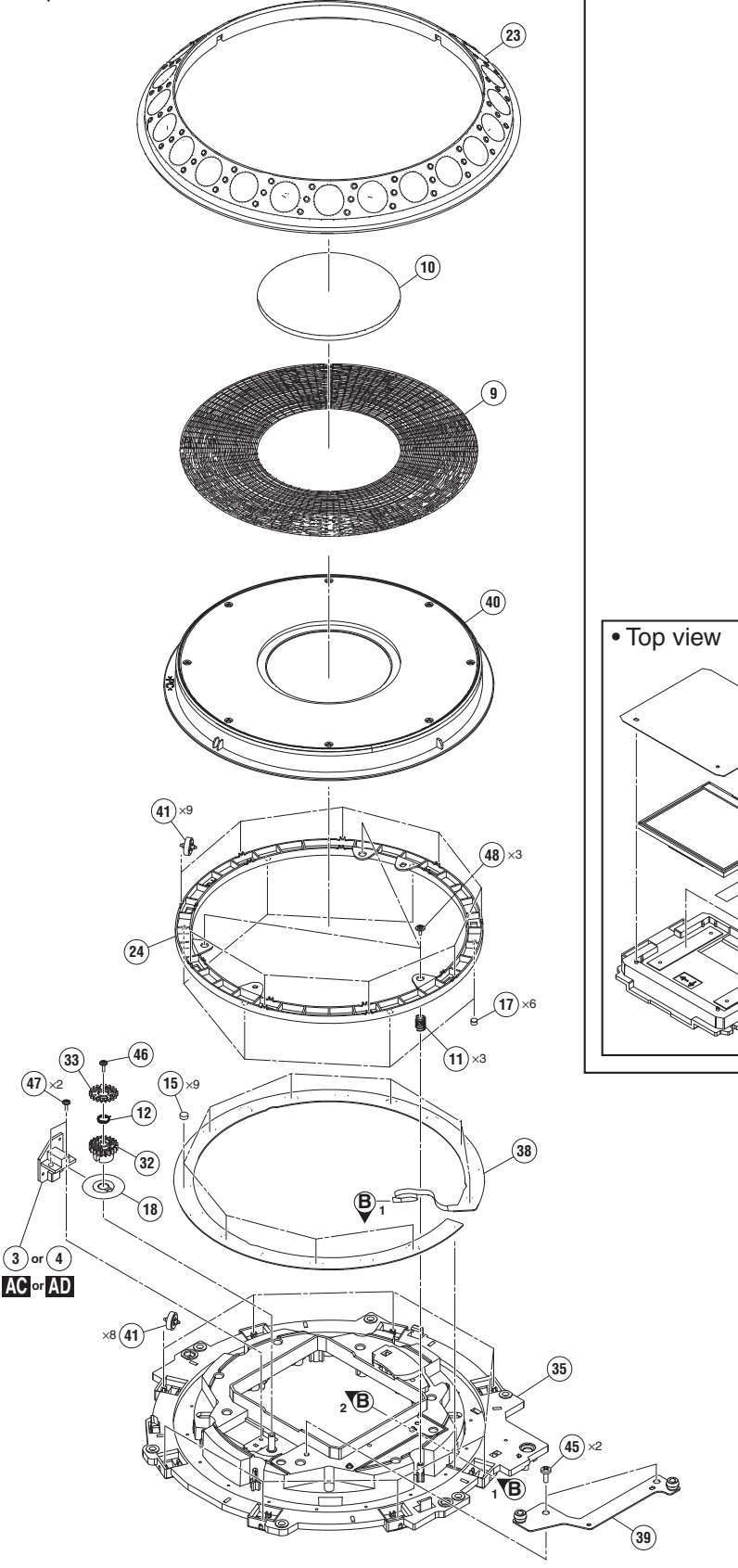
4

A • Bottom view

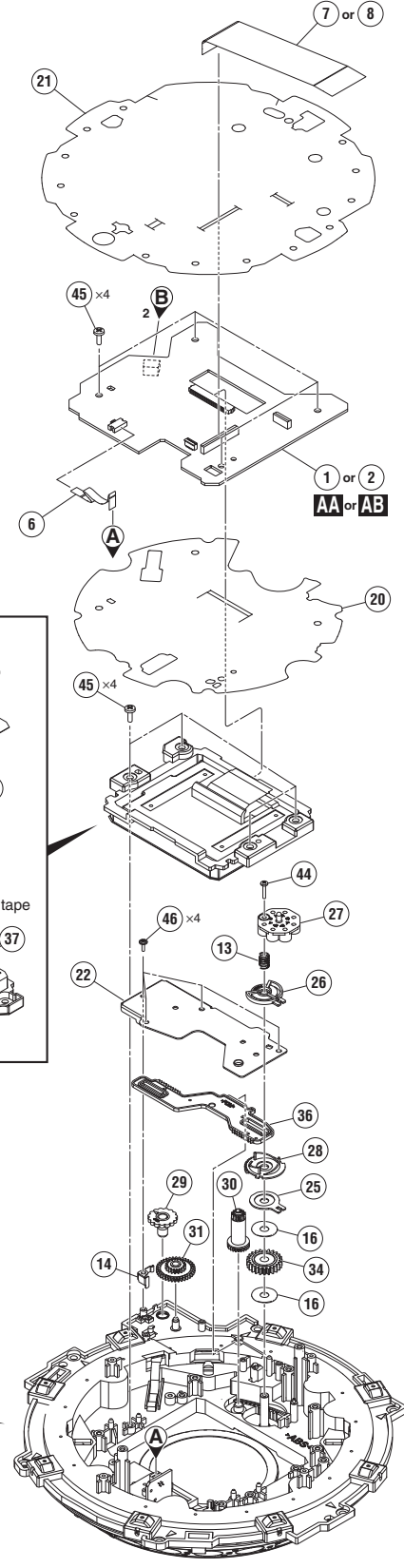
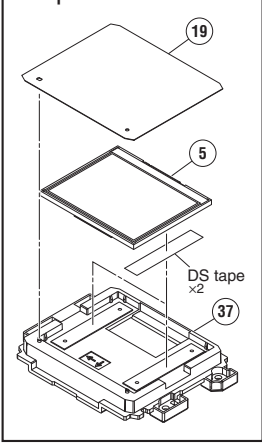
Refer to "7. DISASSEMBLY"



• Top view



• Top view



1

2

3

4

JOG DIAL SECTION PARTS LIST

<u>Mark No.</u>	<u>Description</u>	<u>Part No.</u>	
1	JLCD1 Assy	DWX4288	
2	JLCD2 Assy	DWX4289	A
3	JOG1 Assy	DWX4317	
4	JOG2 Assy	DWX4318	
5	TFT LCD	DWX4228	
6	FFC	DDD1843	
7	FFC (for Left Deck)	DDD1937	
8	FFC (for Right Deck)	DDD1938	
9	JOG Plate	DAH2679	
10	Window	DAH3189	
11	SW Spring	DBH1681	B
12	Encoder Spring	DBH1710	
13	Coil Spring/LD	DBH1798	
14	Leaf Spring/ADJ	DBK1376	
15	SW Cushion HH48/2	DEC2538	
16	Washer	DEC3137	
17	Cushion/RNG	DEC3466	
18	Plate	DEC3700	
19	Sheet	DEC3844	
20	Barrier	DEC3845	C
21	Barrier	DEC3846	
22	Plate	DNH3345	
23	JOG B	DNK4068	
24	SW Ring	DNK5233	
25	Smoother	DNK5237	
26	Comp Plate	DNK5243	
27	Adjust Plate	DNK5300	
28	Cam Plate	DNK5301	
29	Dial Gear	DNK5302	
30	Link Gear A	DNK5303	D
31	Link Gear B	DNK5304	
32	Gear/A	DNK6143	
33	Gear/B	DNK6144	
34	Gear/LD	DNK6145	
35	Holder	DNK6745	
36	Plate	DNK6748	
37	Holder	DNK6866	
38	Sheet SW	DSX1078	E
39	Stay Assy/JOG	DXB2133	
40	JOG Dial A Assy	DXA2159	
41	Roller	DXB2178	
42	•••••		
43	•••••		
44	Screw	BPZ20P100FTC	
45	Screw	BPZ30P080FNI	
46	Screw	IPZ20P060FTC	
47	Screw	IPZ20P080FTC	F
48	Screw (FE)	DBA1265	

LCD SECTION PARTS LIST

<u>Mark No.</u>	<u>Description</u>	<u>Part No.</u>	
1	LCDB Assy	DWX4291	
2	Touch Panel	DSX1130	A
3	TFT LCD	DWX4375	
4	FFC	DDD1951	
5	Dial Knob	DAA1246	
6	Button	DAC3113	
7	Button	DAC3117	
8	Button	DAC3118	
9	Button	DAC3289	
10	Button	DAC3290	
11	Button	DAC3291	B
12	Button	DAC3292	
13	Button	DAC3484	
14	Packing/LCD	DEC3565	
15	Packing/L	DEC3568	
16	Light-D Sheet	DEC3613	
17	Sheet	DEC3741	
18	Packing	DEC3886	
19	Stay	DNH3309	
20	Plate	DNH3310	C
21	Shield Case	DNH3438	
22	Angle	DNH3439	
23	Holder	DNK6467	
24	Lens	DNK6468	
25	Panel	DNK6864	
26	Cover	DNK6865	
27	Barrier	DEC3888	
28	Plate	DAH3264	
29	•••••		D
30	•••••		
31	Screw	BBZ30P060FTB	
32	Screw	BPZ26P080FTC	
33	Screw	BBZ30P060FTC	